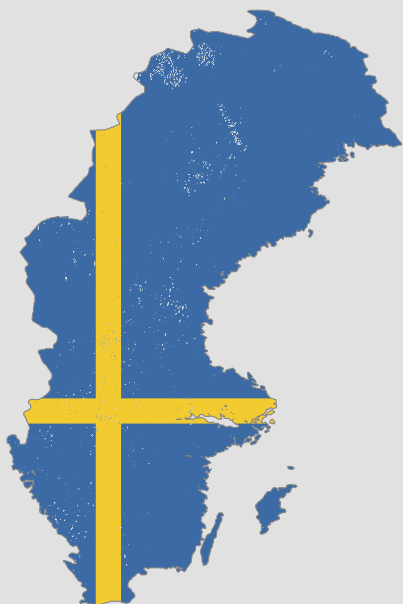




COUNTRY SPECIFIC KIT





MENTOR ME
PROJECT




SWEDEN

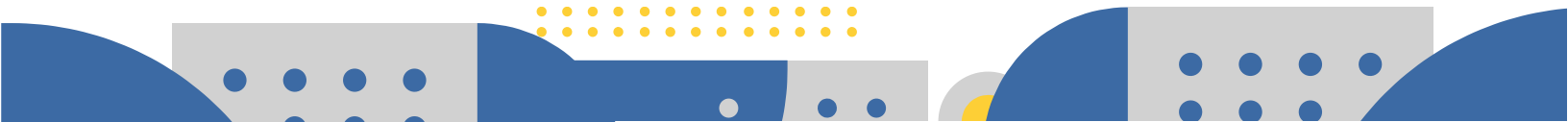
COUNTRY SPECIFIC KIT - SWEDEN

ORGANISATIONS WHICH HAVE ACCESS TO THE TARGET GROUP

Name of Organization	Aims of the Organization	Address	Website	Contact Person (Name, Email and Phone)
 Svenska Röda Korset Red Cross	The Red Cross helps people affected by crises and disasters all over the world.	Hornsgatan 54 Stockholm	Red Cross Website	Email: info@redcross.se
 UNHCR The UN Refugee Agency United Nations High Commissioner for Refugees (UNHCR)	UNHCR is a global organization with the aim of saving lives, protecting the rights of refugees and creating a better future for refugees and stateless people.	Wenner-Gren CenterSveavägen 166, 113 46 StockholmSweden	UNHCR Website	Email: swest@unhcr.org
 Rädda Barnen Save the children	STC work for all children's obvious right to survive, develop and grow up in safety. Here and now for the future, we change children's lives - so that safe children become safe adults.	Gustavslundsvägen 141, Bromma.	Save the Children Website	Email: kundservice@rb.se
 NORWEGIAN REFUGEE COUNCIL Norwegian Refugee Council (NRC)	NRC works to protect the rights of displaced and vulnerable people during crisis.	Floragatan 21 11431 Stockholm	NRC Website	Email: kontakt@nrc.se




Name of Organization	Aims of the Organization	Address	Website	Contact Person (Name, Email and Phone)
 Anna Lindh Foundation	The Anna Lindh Foundation focuses its intercultural action around three pillars: Empowering young voices; Influencing policymakers; Building a movement for dialogue and exchange in the face of growing mistrust and polarization among societies.	Södra vägen 54412 54 Göteborg, Sweden	Anna Lindh Foundation Website	Email: rasha.shaaban@varldskulturmuseerna.se
 Education First	Open the world through educationEF combine language, travel, culture and academic studies to provide courses and programs that transform dreams into limitless possibilities, regardless of age and nationality.	Strandvägen 13B114 87 Stockholm	Education First Website	Email: sprakresor@ef.com
 Mucf: Swedish agency for youth and civil society	MUCF is a government agency. mucf distributes government grants that give large and small organisations the opportunity to conduct business and gives young people the chance to volunteer, study or practice in another European country.	Liedbergsgatan 4, 352 30 Växjö	MUCF Website	Email: info@mucf.se
National Council of Swedish Youth Organisations	The Swedish Association of International Affairs is the national organisation for the associations of international affairs all over Sweden. The purpose of the association is to spread knowledge and create debate about foreign affairs and global issues from a variety of opinions and		National Council Website	Email: https://ufsverige.org/
Volontärbyrå	Volontärbyrå connects volunteers with non-profits. We run a free service for non-profits where they can publish volunteer opportunities	Krukmakargatan 21, 104 62 Stockholm	Volontärbyrå Website	Email: anna.snell@volontarbyran.org



NATIONAL VOLUNTARY SERVICES

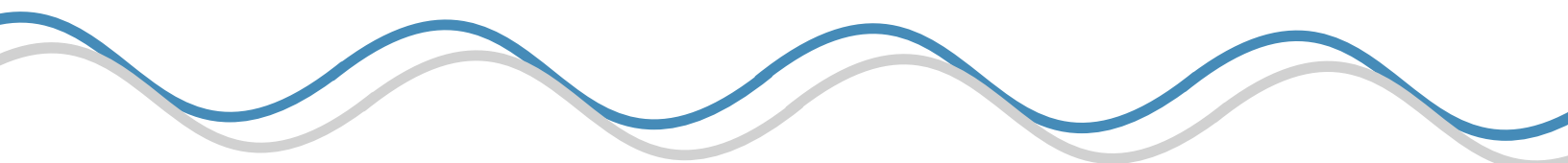
Name of Voluntary Service	Target group (Age)	Characteristics of Voluntary Service (duration, age, language requirements)
Volontärbyrå	All people living in sweden	Depends on the program, good level for swedish and english.
Räddningsnissionen		Work for children, adults and vulnerable elderly people. Duration and age depends on the program.

NETWORKS OF ORGANISATIONS OR PLATFORMS THAT IMPLEMENT AND PROMOTE VOLUNTARY SERVICES

Name	Description	Funded by	Website	Contact
Volontärbyrå	Volontärbyrå connects volunteers with non-profits. They run a free service for non-profits where they can publish volunteer opportunities. (volunteer programmes for companies where we help to connect employees with volunteering opportunities).	Financed through various forms of collaboration and contributions from municipalities, companies, organizations and foundations.	Volontärbyrå Website	info@volontarbyran.org
Kompis sverige	Kompis Sverige was founded in 2013. Kompis Sverige creates meaningful meetings between new and established Swedes, thereby increasing the participants' knowledge of and understanding of each other		Kompis sverige Website	Email: info@kompissverige.se
The Swedish National Board for Youth Affairs	It is Sweden's national agency for the "Youth"		Swedish National Board Website	Email: info@ungdomsstyrelsen.se
 The National Council of Swedish Youth Organisations, LSU	LSU operates as a platform on issues concerning youth, both international and national, and provides a network for national as well as international organisations dealing with youth cooperation.		LSU Website	Email: info@lsu.se

NETWORKS OF ORGANISATIONS OR PLATFORMS THAT IMPLEMENT AND PROMOTE VOLUNTARY SERVICES

Name	Description	Website	Contact
<p>The Swedish Centre for International Youth Exchange (CIU)</p>	<p>is a nonprofit organisation that receives state support for their work promoting the internationalisation of young people. The organisation turns to both participants and arrangers. provides a web service known as "MyTellus.com" which provides information on opportunities for young people in Sweden to acquire international experience by e.g. work, education or voluntary activities abroad.</p>	<p>CIU Website</p>	<p>Email: info@ciu.se</p>
<p>The National Forum for Voluntary Social Work (Forum för Frivilligt Socialt Arbete)</p>	<p>is an umbrella organisation for voluntary social work in Sweden and has about 30 member organisations. The Forum provides a platform for exchange of experiences and competence development among their members, and also works with EU co-ordination for Swedish NGOs. The National Forum for Voluntary Social Work is also running an EU- network as well as Volontärbyrån (the Bureau for Volunteers), whose work is described further on in this report.</p>	<p>Forum Website</p>	



SERVICES, INSTITUTIONS IMPORTANT FOR DAILY LIFE AS THIRD COUNTRY NATIONAL

ADMINISTRATIVE NEEDS

Migrationsverket

[Find the link here](#)

HEALTH INSURANCE

Public	EHIC (European Health Insurance Card)	Find the link here
	The National Board of Health and Welfare (Socialstyrelsen): is the governmental authority that follows voluntary work in the field of social care	Find the link here

HOUSING

Bostadsbologæet	Find the link here
Blocket	Find the link here

POST

Postnord

[Find the link here](#)

BANK

Lunar	Find the link here
Revolut	Find the link here

SERVICES, INSTITUTIONS IMPORTANT FOR DAILY LIFE AS THIRD COUNTRY NATIONAL

LANGUAGE SUPPORT

Kompissverige	Find the link here
Swedish for all	Find the link here
Website to learn swedish language	Find the link here
Svenska med baby	Find the link here

EMERGENCY & HEALTH SERVICES

POLICE: 114 14

FIREFIGHTERS: 112

AMBULANCE: 112

ON-CALL DOCTOR: 1177

MENTAL HEALTH SERVICES

Counselling: 1177

Psychologists: 1177

PERSONAL SUPPORT SERVICES

Support against discrimination	Antidiskrimineringsbyrån	Find the link here
Support against gender violence	Kvinnofridslinjen	Find the link here
Support for victims of criminal offences	Brottsoffermyndigheten	Find the link here
Support for victim of racism	Antidiskrimineringsbyrån	Find the link here
Support for addictions	Addiction rehab	Find the link here
Support for parents and young people	informationsverige	Find the link here
Support for LGBTQ+ community	Rebnbågsfonden	Find the link here

MENTORING PROGRAMMES

FOR YOUNG REFUGEES OR INTERNATIONAL VOLUNTEERS

Name of Organization	Aims of the Organization	Website	Contact Person (Name, Email and Phone)
The Nightingale Mentoring Network	To improve the general quality of mentoring.	205 06 Malmö	Network Website
Mångfaldsbyrn Esmeralda	Pay attention to and counteract the ethnic and social bias in recruitment to universities and colleges.	Uppsala Sweden	Mångfaldsbyrn Esmeralda Website
Mentor Sverige	Works with mentorship for young people	Stockholm, Gothenburg and Malmö	Mentor Sverige Website
Drivkraft	Mentoring activity aimed at students and their families	Helsingborg Malmö	Drivkraft Website
Den Ideella Föreningen Intize	Inspire increased interest in and increase knowledge in mathematics and mathematical thinking.	Gothenburg	Intize Website
Öppet Hus	Opens doors to the labour market for young adults with a foreign background.	Gothenburg	Öppet Hus Website
Novare Leadership Academy	Create unique meetings and dialogues that give the participants tools, knowledge and new perspectives to develop themselves as well as their organisation, business and leadership.	Stockholm	Novare Academy Website



pistes solidaires



Co-funded by
the European Union

